



GSmart A30

GETTING STARTED

Thank you for purchasing the Mustek Gsmart A30.

We have included this convenient Getting Started guide to help with basic camera functions. For more details on the different functions and operations, please refer to the User Guide.

HOW TO CONTACT US

Website:

<http://www.mustek.com>

Customer Service:

(General Info)

E-mail: cservices@mustek.com

FAX: (949) 788-3670

Technical Support:

E-mail: tsupport@mustek.com

Phone: (949) 788-3600

Address:

15271 Barranca Parkway
Irvine, CA 92618

PACKAGE CONTENTS

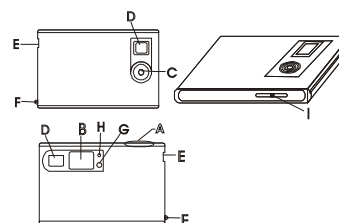
- GSmart A30
- Getting Started
- Users Manual
- Installation CD
- USB cable
- Strap

CAPACITY CHART

PICTURE	Low Compression	High Compression
High Resolution (640 x 480)	26	52
Low Resolution (320 x 240)	104	209
VIDEO	Time	
320 x 240	17 Seconds	

1 IDENTIFYING THE PARTS

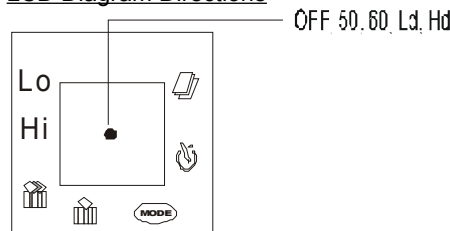
- A. Shutter Button
- B. LCD
- C. Lens
- D. Viewfinder
- E. USB Socket
- F. Strap Hole
- G. Start / Function Button
- H. LED
- I. ON/OFF Switch



2 LCD DISPLAY ICONS

Camera Functions Control

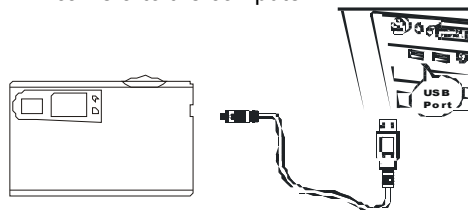
LCD Diagram Directions



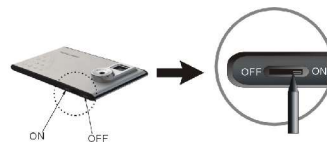
3 CHARGING THE CAMERA

(Fully charge camera before first usage)

Step 1. Using the provided USB cable, connect the camera to the computer.



Step 2. Slide the "ON/OFF" Switch to "ON".



LED: **Red** – Charging; **Green** – Fully Charged (approx. 3 hours. Do **NOT** overcharge battery).

3 CHARGING THE CAMERA - cont

Note: The camera may also be used while charging.

Step 3. Unplug the USB cable after the camera is fully charged.

Warning: To prevent loss of files, download them before sliding the ON/OFF Switch to "OFF".

After 30 seconds of inactivity, the camera switches to "Power Save" mode.

In order to prolong battery life, slide the ON/OFF Switch to "OFF" when not using your camera and after all files have been transferred to your computer.

4 CAMERA SETTINGS

Step 1. Press the **Start / Function Button** to access settings.

Step 2. Once at a desired setting, press the **Shutter Button** to change.

Icons	Descriptions
Hi	High resolution mode (300K pixels)
Lo	Low resolution mode (100K pixels)
OFF	Turn off mode
	Self timer provides a 10 second delay
	Video mode
	Delete all pictures in camera memory
	Only delete the last picture/video taken
MODE	Picture quality selection mode
Hd	High compression (store more pictures)
Ld	Low compression

5 TAKING PICTURES

- Step 1. Slide the **ON/OFF Switch** to “ON”.
- Step 2. Press the **Start/Function Button** to turn on your camera.
- Step 3. **Frame** the subject through the viewfinder.
- Step 4. Press the **Shutter Button** to take a picture.
A beep sound will confirm that a picture was taken.
- Step 5. To turn off the camera, press the **Start/Function Button**, LCD displays “OFF”, then press Shutter Button.

6 TAKING VIDEOS

- Step 1. To take video, press the **Start / Function Button** until you see the Continuous Shoot icon (📹)
- Step 2. Press the **Shutter Button** down and begin taking a video.
- Step 3. **Release** the **Shutter Button** when you are done.

7 DELETING FILES

- Step 1. To **delete all** pictures and videos in the camera's memory, press the **Start / Function Button** until you see the **Delete All** icon (🗑️)
- Step 2. Press the **Shutter Button** once.
- Step 3. When the **Picture Count** starts to **flash**, press the **Shutter Button** again and **all files will be deleted**.
- Step 4. To delete one file at a time, press the **Start / Function Button** to pass the Delete All icon until you see the **Delete One** icon (🗑️)
- Step 5. Press the **Shutter Button** once and the **last** picture or video taken will be deleted.

8 INSTALLING SOFTWARE

- Step 1. Insert installation CD into the CD-ROM drive
- Step 2. Close the CD-ROM drive
- Step 3. An installer wizard will automatically launch.
- If the installer wizard does not appear, then;
- Step 4. Click **Start** in the Windows Taskbar. Then, select **Run** to continue.



- Step 5. Click **Browse** and type **Run.exe**.
- Step 6. Click **Open** and then **OK**
- Step 8. Follow on-screen instructions to complete driver and bundled software installations.

9 TRANSFERRING FILES

- Step 1. After installing the software, connect the camera to the computer with the USB cable provided.
- Step 2. Double click the Digital Camera icon on your Desktop or in the Start Menu.
- Step 3. Choose the **Photo Download** option from the menu.



9 TRANSFERRING FILES - cont

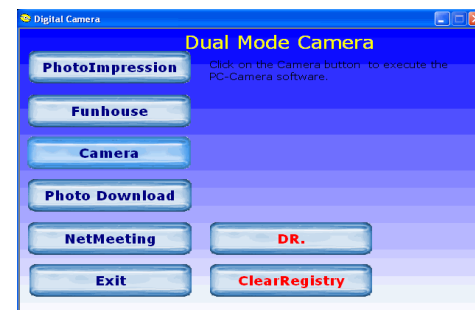
- Step 4. Once the preview panel is loaded, click on the **red** Download Photos camera icon and choose the directory where you want to save your files.



- Step 5. Once your files are transferred, you can quit the Panel application.

10 USING AS A PC CAM

- Step 1. Connect the camera to the computer with the USB cable provided in the package.
- Step 2. Double click the Digital Camera icon on the Desktop or in the Start Menu.
- Step 3. Once the menu is up, choose the **Net Meeting** option.



For further information on how to use Net Meeting, please visit Microsoft's on line tutorial page.